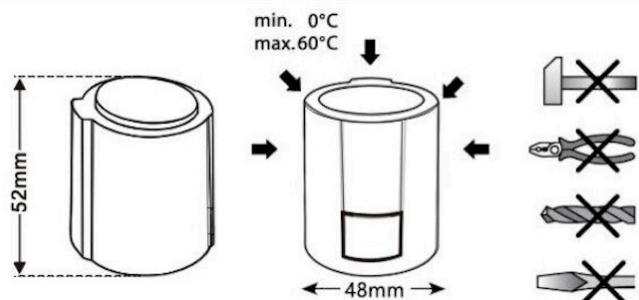


# Manual do utilizador

## Comando eletrotérmico H30-9

230 V +/- 10%  
 2W 50-60 Hz  
 Min temp 0°C  
 Max temp 60°C

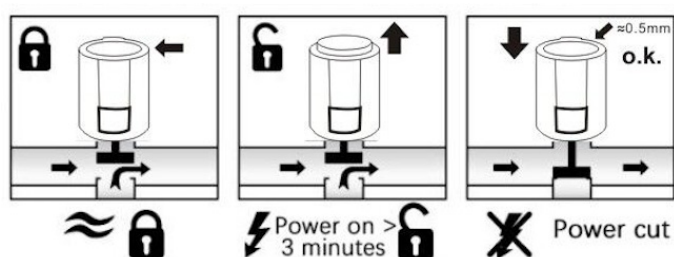


**HENQ™**



### Normalmente fechado

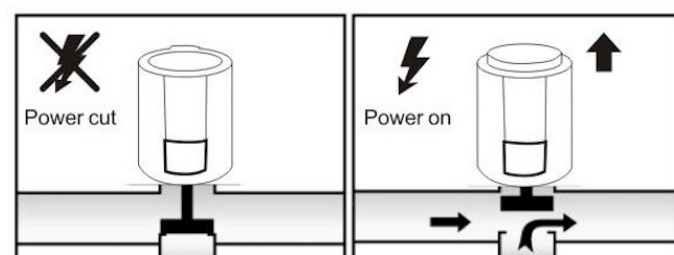
#### Primeira utilização



#### Verificar

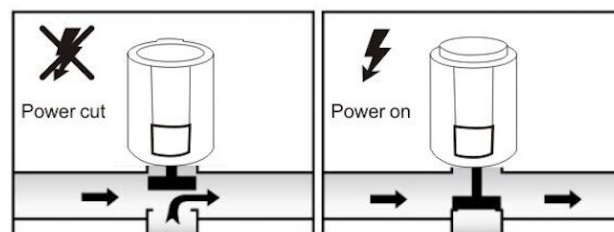


### Modo de funcionamento

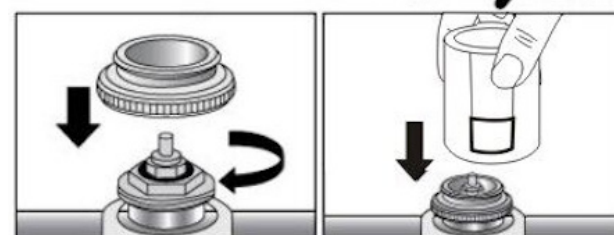


### Normalmente aberto

#### Modo de funcionamento



#### Instalar



#### Remover

